



Makita[®]

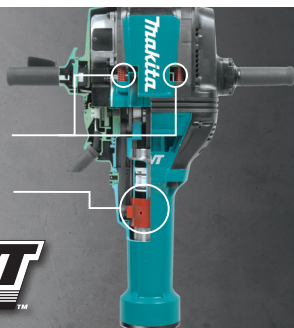
**RENTAL PROVEN
RENTAL STRONG**

makitatools.com

HITS LIKE AIR WITHOUT THE VIBRATION

Vibration absorbing housing moves independently of the motor and hammer mechanism effectively isolating more vibration away from the user

Mechanical counterbalance system greatly reduces vibration and directs more impact energy to the work surface



HM1812X3 70.Lb.

70 lb. Advanced AVT® Breaker Hammer

- Efficient 15 AMP motor with improved hammer mechanism delivers 53.9 ft.lbs./72.8 joules of impact energy
- Soft start is designed to suppress start-up reaction for greater accuracy on start up

Accepts 1-1/8" Hex bits & comes with 4 bits & hammer cart



HM1810X3 70.Lb.

70 lb. AVT® Breaker Hammer

- Efficient 15 AMP motor with improved hammer mechanism delivers 46.5 ft.lbs. of impact energy
- Fixed movement handles for more control and better accuracy

Accepts 1-1/8" Hex bits & comes with 4 bits & hammer cart



HM1512 45.Lb.

45 lb. AVT® Demolition Hammer

- Powerful 15 AMP motor delivers 18.8 ft.lbs. of impact energy to handle the most demanding applications
- Anti-Vibration Technology (AVT®) is an internal counterbalance system that greatly reduces vibration

Accepts 1-1/8" Hex bits



HM1502 43.Lb.

43 lb. Demolition Hammer

- Powerful 15 AMP motor delivers 36.2 ft.lbs. of impact energy to handle the most demanding applications
- In-line body design is better adapted for working in narrow spaces and provides improved balance for increased maneuverability

Accepts 1-1/8" Hex bits



HM1317CB 42.Lb.

42 lb. AVT® Demolition Hammer

- Powerful 14 AMP motor delivers 25.7 ft.lbs. of impact energy to handle the most demanding applications
- Anti-Vibration Technology (AVT®) is an internal counterbalance system that greatly reduces vibration

Accepts 1-1/8" Hex bits



HM1307CB 35.Lb.

35 lb. Demolition Hammer

- Powerful 14 AMP motor delivers 25.7 ft.lbs. of impact energy to handle the most demanding applications
- Soft Start suppresses start-up reaction for smoother start-ups and better accuracy

Accepts 1-1/8" Hex bits



HM1214C 27.Lb.

27 lb. AVT® Demolition Hammer

- Powerful 14 AMP motor delivers 19 ft.lbs. of impact energy to handle the most demanding applications
- Anti-Vibration Technology is an internal counterbalance system that greatly reduces vibration

Accepts SDS-MAX bits



HM1213C 23.Lb.

23 lb. AVT® Demolition Hammer

- Powerful 14 AMP motor delivers 18.8 ft.lbs. of impact energy to handle the most demanding applications
- Anti-Vibration Technology (AVT®) is an internal counterbalance system that greatly reduces vibration

Accepts SDS-MAX bits



HM1203C 20.Lb.

20 lb. Demolition Hammer

- Powerful 14 AMP motor delivers 18.8 ft.lbs. of impact energy to handle the most demanding applications
- Variable speed control dial enables user to match the speed to the application for greater versatility

Accepts SDS-MAX bits



HM1111C 17.Lb.

17 lb. AVT® Demolition Hammer

- Powerful 14 AMP motor delivers 12.7 ft.lbs. of impact energy to handle the most demanding applications
- Detached rear handle is spring loaded to provide less vibration and more control

Accepts SDS-MAX bits



HM0871C 12.Lb.

12 lb. AVT® Demolition Hammer

- Powerful 10 AMP motor delivers 8.6 ft.lbs. of impact energy to handle the most demanding applications
- Anti-Vibration Technology (AVT®) is an internal counterbalance system that greatly reduces vibration

Accepts SDS-MAX bits



HM0870C 11.Lb.

11 lb. Demolition Hammer

- Powerful 10 AMP motor delivers 8.4 ft.lbs. of impact energy to handle the most demanding applications
- Soft start suppresses start-up reaction for better accuracy

Accepts SDS-MAX bits



HR5212C

2" Advanced AVT® Rotary Hammer

- Powerful 15 AMP motor delivers 14 ft.lbs. / 19 J. of impact energy
- Electronic Controller is a feature package that provides constant speed control, soft start, soft no-load and variable speed

Accepts SDS-MAX bits



HR4510C

1-3/4" AVT® Rotary Hammer

- Powerful 13.5 AMP motor delivers 9.2 ft.lbs. of impact energy to handle the most demanding applications
- Soft start suppresses start-up reaction for increased accuracy

Accepts SDS-MAX bits



HR4013C

1-9/16" Advanced AVT® Rotary Hammer

- Powerful 11 AMP motor delivers 8.4 ft.lbs. / 11.4 J. of impact energy to handle the most demanding applications
- Electronic Controller is a feature package that provides constant speed control, soft start, soft no-load and variable speed

Accepts SDS-MAX bits



XRH07PTU

18V X2 LXT® (36V) Brushless

1-9/16" Advanced AVT® Rotary Hammer Kit, AWS™

- Two 18V LXT® Lithium-Ion batteries deliver the power and run time for corded demands without leaving the 18V LXT® platform
- Dust extraction capability with optional Makita Dust Attachment Kit

Accepts SDS-MAX bits



ALSO AVAILABLE

PDC01

LXT® and LXT® X2 (36V) Portable Backpack Power Supply

- Backpack utilizes four Lithium-Ion batteries to provide longer run time for LXT® and LXT® X2 (36V) tools





HR4002

1-9/16" Rotary Hammer

- Powerful 10 AMP motor delivers 4.6 ft.lbs. of impact energy
- 2-mode operation for "Hammering Only" or "Hammering with Rotation"



Accepts SDS-MAX bits

HR4041C

1-9/16" Rotary Hammer

- Powerful 11 AMP motor delivers 6.8 ft.lbs. of impact energy
- Constant speed control automatically applies additional power to the motor to maintain speed under load



Accepts SPLINE bits

HR3001CK

1-3/16" Rotary Hammer

- Powerful 7.5 AMP motor delivers 2.9 ft.lbs. of impact energy to handle the most demanding applications
- Constant speed control automatically applies additional power to the motor to maintain speed under load to complete the most challenging jobs



Accepts SDS-PLUS bits

HR3011FCK

1-3/16" AVT® Rotary Hammer

- Powerful 7.5 AMP motor delivers 2.9 ft.lbs. of impact energy to handle the most demanding applications
- Dust extraction capability with optional OSHA Table 1 compliant On-Board Dust Extractor Attachment



Accepts SDS-PLUS bits

HR2661

1" AVT® Rotary Hammer w/ HEPA Dust Extractor

- Powerful 8 AMP motor delivers 2.1 ft.lbs. of impact energy to handle the most demanding applications
- Anti-Vibration Technology (AVT®) is an internal counterbalance system that actively works to reduce vibration to the operator



Accepts SDS-PLUS bits

XRHO11TWX

18V LXT® Brushless 1" Rotary Hammer Kit, w/ HEPA Dust Extractor Attachment

- Powerful BL™ Brushless motor delivers 0-950 RPM, 0-4,700 BPM and 1.7 ft.lbs. of impact energy to handle the most demanding applications
- The on-board dust extractor attachment captures concrete dust during drilling and is activated by the tool for operator convenience



Accepts SDS-PLUS bits

XRHO8PTW

18V X2 LXT® 36V Brushless 1-1/8" AVT® Rotary Hammer Kit w/ HEPA Dust Extractor

- X2 LXT® technology delivers up to 140 1/2" x 2-3/8" holes per charge using two 18V LXT® 5.0Ah batteries
- Powerful BL™ Brushless motor delivers 0-980 RPM, 0-5,000 BPM and 2.3 ft.lbs. of impact energy to handle the most demanding applications



Accepts SDS-PLUS bits

XRT01TK

18V LXT® Brushless Rebar Tying Tool Kit

- Up to 5,300 ties of #3 x #3 diameter rebar using an 18V LXT® 5.0Ah Battery
- Multiple bar tying capability; ties up to two #5 diameter bars or four #4 diameter bars in under 1 second



LXT. BRUSHLESS

ALSO AVAILABLE

191L22-4

USA Made Steel Tie Wire, 21 Ga, 50/pk

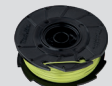
- 21 gauge diameter black annealed steel wire for maximum strength
- Up to 120 ties per wire reel allowing for maximum productivity



191J59-9

Poly-Coated Tie Wire, 21 Gauge, 50/pk

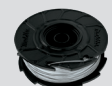
- 21 gauge diameter for maximum strength
- Up to 120 ties per wire reel allowing for maximum productivity



191A57-9

Electro Galvanized Tie Wire, 21 Gauge, 50/pk

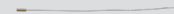
- 21 gauge diameter for maximum strength
- Up to 120 ties per wire reel allowing for maximum productivity



162755-6

Wire Guide Nylon Brush

- Designed to clean residue from the wire guide
- Made of nylon bristles



XCS01T1

18V LXT® Rebar Cutter Kit

- Up to 125 cuts of #6 (3/4") rebar on a single charge using 5.0Ah LXT® Battery
- Cutting capacity range of 1/8"- 3/4"; cuts up to 60 grade #6 rebar



XCS04T1

18V LXT® Brushless Rebar Cutter Kit

- Performs up to 233 cuts of #5 rebar with one 18V LXT® 5.0Ah Battery
- Cutting capacity range of 1/8"- 5/8"
- Spark free cutting of rebar and steel rod



XRVO1T

18V LXT® 4' Concrete Vibrator Kit

- Makita-built motor delivers 13,000 VPM to help increase strength of concrete
- Dual-directional switch to conveniently hold the tool in either horizontal or vertical positions



XRVO2T

18V LXT® 8' Concrete Vibrator Kit

- Makita-built motor delivers 12,500 VPM to help increase strength of concrete
- Dual directional switch to conveniently hold the tool in either horizontal or vertical positions



PC5010CX1

5" SJS™ II Concrete Planer with Dust Extraction Shroud and Diamond Cup Wheel

- Integrated dust extraction shroud is designed to capture dust during concrete surfacing applications
- Powerful 12.0 AMP motor delivers more output and (4,000 - 9,000) RPM



NEW

XGT[®]

BEYOND LIMITS

40V | 80V max

A NEW SYSTEM OF EQUIPMENT AND TOOLS

XGT[®] is a new 40V | 80V max system of cordless equipment and tools. XGT[®] outpowers, outsmarts, and outlasts the rest. Through Makita's innovative engineering, the technology within XGT[®] will lead to creating the equipment and tools of the future.



OUTPOWER

OUTSMART

RARE EARTH MAGNETS

BUILT-IN MICROCHIPS

PURE COPPER WIRE

DIGITAL COMMUNICATION



OUTLAST

IMPACT ABSORBENT
STRUCTURE

MULTI-LAYER
SURFACE CONTACTS

WATER & DUST
RESISTANCE

RAPID OPTIMUM
CHARGING SYSTEM

GRH01M1W

40V max XGT[®] Brushless 1-1/8" AVT[®] Rotary Hammer Kit with Dust Extractor, AFT[®], AWS[®] Capable

- Makita-built brushless motor along with 40V max XGT[®] battery combine to deliver the power performance required for heavy-load application

Accepts SDS-PLUS bits Also Available: GRH01Z, Tool Only



GRH05M1

40V max XGT[®] Brushless 1-9/16" AVT[®] Rotary Hammer Kit, AFT[®], AWS[®] Capable

- Makita-built brushless motor along with 40V max XGT[®] battery combine to deliver the power performance required for heavy-load application

Accepts SDS-MAX bits Also Available: GRH05Z, Tool Only



GRH06PM

80V max XGT[®] Brushless 2" AVT[®] Rotary Hammer Kit, AFT[®], AWS[®] Capable

- Makita-built brushless motor along with two 40V max XGT[®] batteries combine to deliver up to 27% faster drilling than corded equivalent model*

Accepts SDS-MAX bits Also Available: GRH06Z, Tool Only



GMH01M1 15LB.

40V max XGT[®] Brushless 15 lb. AVT[®] Demolition Hammer Kit, AWS[®] Capable

- Makita brushless motor along with 40V max XGT[®] battery combine to deliver up to 20% faster breaking efficiency than corded equivalent model*

Accepts SDS-MAX bits Also Available: GMH01Z, Tool Only



GMH02PM 28LB.

80V max (40V max X2) XGT[®] Brushless 28 lb. AVT[®] Demolition Hammer Kit, AWS[®] Capable

- Makita-built brushless motor along with two 40V max XGT[®] batteries combine to deliver up to 15% faster breaking efficiency than corded

Accepts SDS-MAX bits Also Available: GMH02Z, Tool Only





Bull Point

Demolition applications and starts holes in concrete

| 1-1/8" | | SDS-MAX | | SDS-PLUS | |
|-----------------------------------|----------------------------------|------------|----------------------|----------|---------|
| Diameter | Part # | Diameter | Part # | Diameter | Part # |
| Self-Sharpening 20-1/2" 16" | D-21353* D-21353-5 B-45559 | 12" 18" | 751423-A 751424-A | 10" | D-51144 |



Flat Chisel

General purpose chipping, edging and channeling

| 1-1/8" | | SDS-MAX | | SDS-PLUS | |
|----------|-----------------------|----------------------|----------------------|------------|---------|
| Diameter | Part # | Diameter | Part # | Diameter | Part # |
| 20-1/2" | D-21369* D-21369-5 | 1" x 12" 1" x 18" | 751228-A 751231-A | 3/4" x 10" | D-51150 |



Scaling Chisel

Wide chisel with two cutting angles for chipping dried concrete

| 1-1/8" | | SDS-MAX | | SDS-PLUS | |
|----------|-----------------------|----------------------|----------------------|------------|---------|
| Diameter | Part # | Diameter | Part # | Diameter | Part # |
| 20-1/2" | D-21347* D-21347-5 | 1" x 12" 1" x 18" | 751229-A 751230-A | 3/4" x 10" | D-51166 |



Floor Scraper

Cleanly Removes Tile, Linoleum and Flooring Adhesive

| 1-1/8" | | SDS-MAX | | SDS-PLUS | |
|----------|--------|----------|---------|----------|---------|
| Diameter | Part # | Diameter | Part # | Diameter | Part # |
| — | — | 6" Wide | T-02593 | 4" Wide | A-30106 |



One Piece Bushing Tool

Removes excess concrete and roughens surface

| 1-1/8" | | SDS-MAX | | SDS-PLUS | |
|------------------|----------|--------------|----------|----------|--------|
| Diameter | Part # | Diameter | Part # | Diameter | Part # |
| 1-3/4" x 14-3/4" | 751717-A | 1-3/4" x 10" | 751715-A | — | — |



Asphalt Cutter

Cuts asphalt or hard ground (not for use in concrete)

| 1-1/8" | | SDS-MAX | | SDS-PLUS | |
|--------------|----------|----------|----------|----------|--------|
| Diameter | Part # | Diameter | Part # | Diameter | Part # |
| 5" x 17-1/2" | 751620-A | 5" x 15" | 751624-A | — | — |



Clay Spade

Digs clay, shale, hard packed gravel and dirt

| 1-1/8" | | SDS-MAX | | SDS-PLUS | |
|--------------|----------|--------------|----------|----------|--------|
| Diameter | Part # | Diameter | Part # | Diameter | Part # |
| 5-1/2" x 20" | 751622-A | 4-1/2" x 17" | 751626-A | — | — |



Ground Rod Driver

Drives ground rods into the ground

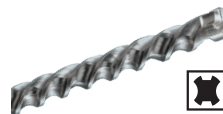
| 1-1/8" | | SDS-MAX | | SDS-PLUS | |
|---------------------------|----------|-----------------------------|----------|----------|--------|
| Diameter | Part # | Diameter | Part # | Diameter | Part # |
| 1" I.D. x 2-1/4" x 16" | 751102-A | 3/4" I.D. x 2-3/4" x 10" | 751108-A | — | — |



SDS-MAX Rotary Hammer 6-Cutter Carbide Bits

- 6 Cutting Edges engineered for drilling in reinforced concrete
- Longer life, less vibration, and faster than competitive 4-cutter carbide bits
- Plows through rebar

| Diameter/Length | Part # | Diameter/Length | Part # | Diameter/Length | Part # |
|-----------------|---------|-----------------|---------|-----------------|---------|
| 5/8" x 13" | B-61341 | 7/8" x 13" | B-61422 | 1-1/8" x 36" | B-61503 |
| 5/8" x 21" | B-61357 | 7/8" x 21" | B-61438 | 1-1/4" x 13" | B-61519 |
| 5/8" x 36" | B-61363 | 7/8" x 36" | B-61444 | 1-1/4" x 21" | B-61525 |
| 11/16" x 21" | B-61379 | 1" x 13" | B-61450 | 1-1/4" x 36" | B-61531 |
| 3/4" x 13" | B-61385 | 1" x 21" | B-61466 | 1-3/8" x 21" | B-61547 |
| 3/4" x 21" | B-61391 | 1" x 36" | B-61472 | 1-3/8" x 36" | B-61553 |
| 3/4" x 36" | B-61400 | 1-1/8" x 13" | B-61488 | 1-1/2" x 21" | B-61569 |
| 13/16" x 21" | B-61416 | 1-1/8" x 21" | B-61494 | 1-1/2" x 36" | B-61575 |



SDS-PLUS Rotary Hammer 3-Cutter Carbide Bits

- (3) 135 Cutting Edges offer the most efficient drilling without cracking the concrete around it
- Self-centering tungsten carbide tip features a more aggressive design for faster and more reliable hole starting
- Plows through rebar

| Diameter/Length | Part # | Diameter/Length | Part # | Diameter/Length | Part # |
|-----------------|---------|-----------------|---------|-----------------|---------|
| 3/16" x 4" | B-60975 | 1/4" x 12" | B-61042 | 1/2" x 12" | B-61117 |
| 3/16" x 6" | B-60981 | 5/8" x 6" | B-61058 | 1/2" x 18" | B-61123 |
| 3/16" x 8" | B-60997 | 5/8" x 12" | B-61064 | 5/8" x 10" | B-61139 |
| 3/16" x 12" | B-61008 | 3/8" x 6" | B-61070 | 5/8" x 18" | B-61145 |
| 1/4" x 4" | B-61014 | 3/8" x 12" | B-61086 | 3/4" x 10" | B-61151 |
| 1/4" x 6" | B-61020 | 3/8" x 18" | B-61092 | 3/4" x 18" | B-61167 |
| 1/4" x 8" | B-61036 | 1/2" x 6" | B-61101 | — | — |



SDS-MAX Core Bits



| Diameter/Length | Usable Length | Overall Length | Part # |
|--|---------------|----------------|---------|
| 9" SDS-MAX Rotary Hammer Core Bit Shank Adapter | 3" | 4" | B-66612 |
| 16-1/2" SDS-MAX Rotary Hammer Core Bit Shank Adapter | 3" | 4" | B-66628 |
| 1-3/4" Rotary Hammer Core Bit | 3" | 4" | B-66634 |
| 2" Rotary Hammer Core Bit | 3" | 4" | B-66640 |
| 2-5/8" Rotary Hammer Core Bit | 3" | 4" | B-66656 |
| 3-1/8" Rotary Hammer Core Bit | 3" | 4" | B-66662 |
| 4" Rotary Hammer Core Bit | 3" | 4" | B-66678 |
| 5" Rotary Hammer Core Bit | 3" | 4" | B-66684 |
| 6" Rotary Hammer Core Bit | 3" | 4" | B-66690 |
| 7/16" x 4-1/2" Rotary Hammer Core Bit Centering Bit | 3-1/2" | 4-1/2" | B-66709 |
| Rotary Hammer Core Bit Drift Pin | — | — | B-66715 |

POWER CUTTERS



XEC01PT1

18V X2 LXT® (36V) Brushless 9" Power Cutter Kit

- Eliminates the hassles of gas with lower noise, reduced maintenance, and zero emissions allowing use in indoor environments
- The BL™ Brushless Motor powered by two 18V LXT™ batteries eliminates the hassle of engine pull starts
- Makes single pass cuts up to 3-1/2" in various materials



LXT BRUSHLESS

ALSO AVAILABLE



9" Diamond Blade, Segmented, General Purpose

Part #

E-02515



9" Diamond Blade, Turbo, General Purpose

Part #

E-02559



9" Ultra-Premium Plus Diamond Blade, Segmented, General Purpose

Part #

E-02973



9" x .079" x 7/8" INOX Thin Cut-Off Wheel, 36 Grit

Part #

E-03012

EK7651H

14" 75.6 cc MM4® 4-Stroke Engine Power Cutter

- Automatic engine decompression valve is engineered into the cam gear to reduce pull-start force by 40%
- Pressure compensated carburetor with vented choke plate allows for optimum fuel delivery and reduces the occurrence of flooding during cold starts



EK8100

16" 81 cc Power Cutter

- Improved deco-valve and metering spring for precise fuel regulation
- Start capacitor with start support function stores electrical energy resulting in significantly less pull start force



EK7301

14" 73 cc Power Cutter

- Improved decompression valve and metering spring for precise fuel regulation
- Start capacitor with start support function resulting in significantly less pull start force



EK6101

14" 61 cc Power Cutter

- Compact performance at Only 19.6 lbs with 4.4 HP/61 cc Engine
- Cyclonic air Intake delivers more air, more efficiently and increases air filter life by discarding 90% of larger debris
- Single inverted filter provides 500+ running hours between replacement



4114X

14" SJS™ Angle Cutter

- SJS™ technology is a mechanical clutch system that helps prevent motor and gear damage
- Built-in vacuum attachment port and rubber shield reduces dust and debris



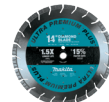
POWER CUTTER ACCESSORIES



14" Diamond Blade, Segmented, Dual Purpose

Part #

B-69674



14" Ultra-Premium Plus Diamond Blade, Segmented

Part #

E-02652



14" Diamond Blade, Segmented, General Purpose

Part #

E-01719



14" Diamond Blade, Segmented, General Purpose, Contractor 3/4"

Part #

B-69646

Dolly & Attachments



OSHA COMPLIANT

- Comes completely assembled
- Depth-wheel weighted for greater stability

| Description | Model | Part # |
|---------------------------|----------------|-------------|
| Dolly & Gravity Feed Tank | | DT2010 |
| Angled Gas Filler | EK7301, EK8100 | 010-114-040 |
| Water Attachment Kit | | 957-365-902 |

| Description | Model | Part # |
|---------------------------|---------|----------|
| Dolly & Gravity Feed Tank | | DT4000 |
| Water Attachment Kit | EK7651H | 195533-9 |

2.6 Gallon Pressurized Water Tank

OSHA COMPLIANT

Part #

988-394-610



| Description | Model | Part # |
|--------------|--|-------------|
| Pre Filter | DPC6410, DPC7310, DPC7311, DPC7321, EK301, DPC8112 | 326-173-081 |
| | DPC7311, EK7301, DPC8132, EK8100 | 395-173-081 |
| | EK7651H | 195945-6 |
| Air Filter | DPC6410, DPC7310, DPC7311, DPC7321, DPC8112 | 198172-4 |
| | EK8100, EK7301, EK7651H | 442165-6 |
| | EK6101 | 424789-0 |
| Inner Filter | DPC6410, DPC7310, DPC7311, DPC7321, DPC8112 | 394-173-020 |
| | DPC7331, DPC8132, EK7301, EK8100 | 395-173-021 |
| | EK7651H | 424399-3 |
| | EK6101 | 315-173-020 |
| 5+1 Filter | DPC7331, EK7301, EK8100 | 957-173-110 |
| | EK7651 | 195599-9 |

2-Cycle Synthetic Engine Oil

- For all 2-stroke models



| Size | Qty./Pkg. | Part # |
|---------|-----------|------------|
| 2.6 oz. | 1 | T-00745 |
| 2.6 oz. | 48 | T-00745-48 |
| 6.4 oz. | 1 | T-00739 |
| 6.4 oz. | 48 | T-00739-48 |

4-Stroke Engine Oil

- 10W-30 Engine Oil
- For all 4-stroke models



| Size | Qty./Pkg. | Part # |
|---------|-----------|-------------|
| 2.7 oz. | 1 | 195826-4 |
| 2.7 oz. | 48 | 195826-4-48 |
| 6.7 oz. | 1 | T-02484 |
| 6.7 oz. | 12 | T-02490 |



HEPA filter
VC4210L

POWERFUL WET/DRY CLEANING SOLUTION

Powerful 12 AMP motor generates 148 CFM of suction power and 92" of water lift

Motor chamber constructed of quality sound-absorbing materials resulting in a quiet operating sound level of 60 dB(A)



Secure interlocking case on top of the unit



On-board tool-activated power outlet

DUST EXTRACTORS



VC4210L

11 Gallon Wet/Dry HEPA Filter Dust Extractor/Vacuum, AWS™ Capable

- Powerful 12 AMP Motor Generates 148 CFM of Suction Power and 92" of Water Lift
- Automatic Filter Cleaning System for longer filter life



XCV04PT

18V X2 LXT® (36V) 2.1 Gallon HEPA Filter Dry Dust Extractor/Vacuum Kit

- Powerful Makita-built motor delivers 127 CFM and 96" water lift of suction using corded power
- Powerful Makita-built motor delivers 74 CFM and 36" water lift of suction using two 18V LXT® Lithium-Ion batteries



XCV08PT

18V X2 LXT® (36V) Brushless 2.1 Gal HEPA Filter Dry Dust Extractor/Vac Kit, AWS™

- Powerful BL™ Brushless motor delivers 74 CFM and 39" water lift of suction using two 18V LXT® Lithium-Ion batteries
- Efficient three stage HEPA filtration system captures 99.97% of particulates .3 microns and larger



XCV16ZX

18V X2 LXT® (36V) Brushless 4 Gal. HEPA Filter Dry Dust Extractor, AWS™

- Powerful BL™ Brushless motor delivers 74 CFM and 39" water lift of suction using two 18V LXT® Lithium-Ion batteries (batteries not included)
- Efficient three stage HEPA filtration system captures 99.97% of particulates .3 microns and larger



XCV10ZX

18V X2 LXT® (36V) BL™ 1/2 Gal. HEPA Filter Backpack Dust Extractor, AWS™ Capable

- Powerful BL™ Brushless Motor generates 64 CFM of suction power and 44" of water lift
- Up to 62 minutes of continuous operation on normal setting and 33 minutes on high setting using two 18V LXT® 5.0Ah batteries (batteries not included)



XCV18ZX

18V X2 LXT® Brushless 1.6 Gal. HEPA Filter Backpack Dust Extractor, AWS™ Capable

- Powerful BL™ Brushless Motor generates 64 CFM of suction power & 44" of water lift
- Up to 62 minutes of continuous operation on normal setting and 33 minutes on high setting using two 18V LXT® 5.0Ah batteries (batteries not included)



VC4210L ACCESSORIES

| Description | Part # | Description | Part # |
|----------------------------------|------------|----------------------------|------------|
| Dust Class H HEPA Filter | W107413555 | Fleece Filter Bag (5/pk) | W107418353 |
| PTFE Flat Filter | W107418351 | Disposable Dust Bag (5/pk) | W107418355 |
| Cleaning Set | W107418349 | Interlocking Case, Small | 197210-9 |
| 12" Concrete Slurry Floor Nozzle | P-72964 | Interlocking Case, Medium | 197211-7 |
| 11" Wet/Dry Floor Nozzle | P-81789 | Interlocking Case, Large | 197212-5 |

XPG01Z NEW
18V LXT® Grease Gun

- Powerful motor delivers up to 10,000 PSI of Max pressure
- Features two speed modes; Low and Auto-Speed for better control



XPG01 KIT MODELS AVAILABLE, ASK SALES REP FOR DETAILS.

LXT

ALSO AVAILABLE

191A78-1
1/8" NPT Heavy Duty Grease Coupler Set, 3/pk

- 3-jaw coupler assembly creates a leak-free grip on zerk fittings



191A81-2
450g Large Grease Barrel

- Large grease barrel holds an increased capacity up to 450 grams



191A79-9
47-1/4" Flexible Grease Gun Hose with Coupler

- 47-1/4" flexible hose length for maximum maneuverability and access to difficult to reach zerk fittings



191B12-7
400g Large Grease Barrel

- Grease barrel holds a capacity up to 400 grams (14 oz.)



191A80-4
23-5/8" Flexible Grease Gun Hose with Coupler

- 23-5/8" flexible hose length for reduced clutter during storage



191F23-6
500g Extra Large Grease Barrel

- Extra large grease barrel holds an increased capacity up to 500 grams



XTU02T
18V LXT® Brushless 1/2" Mixer Kit

- Ideal for mixing drywall mud, plaster, drilling large holes and more
- Variable 2-speed design (0-350 RPM and 0-1,300 RPM) for optimum speed control and mixing versatility

LXT BRUSHLESS



TW1000
1" Impact Wrench w/ Friction Ring Anvil

- Max torque of 738 ft.lbs.
- Efficient impact system with less vibration



GWT01D NEW
40V max XGT® Brushless 4-Speed High-Torque 3/4" Sq. Drive Impact Wrench Kit w/ Friction Ring Anvil

- Makita-built motor delivers 1,510 ft.lbs. of Nut-Busting Torque and 1,330 ft.lbs. of Fastening Torque
- 3 forward and 3 reverse Auto-Stop modes for increased efficiency

XGT



GWT04D NEW
40V max XGT® Brushless 4-Speed 1/2" Sq. Drive Impact Wrench Kit w/ Friction Ring Anvil

- Makita-built motor delivers 465 ft.lbs. of Nut-Busting Torque and 260 ft.lbs. of Fastening Torque
- 3 forward and 3 reverse Auto-Stop modes for increased efficiency

XGT



6922NB
3/4" Shear Wrench

- Delivers 593 ft.lbs. of max torque for the most demanding applications
- Anti-slipping mechanism: tool won't start until inner sleeve engages with bolt tip



XTW01PT
18V X2 LXT® (36V) Brushless Shear Wrench Kit

- Two 18V LXT® Lithium-Ion batteries deliver the power and run time for corded demands without leaving the 18V LXT® platform
- Up to 14% faster fastening than Makita corded model 6922NB

LXT X2 18V + 18V 36V



XRW01SR1
18V LXT® 3/8" / 1/4" Sq. Drive Ratchet Kit

- Interchangeable 3/8" and 1/4" anvils for added versatility
- Powerful motor delivers 35 ft.lbs. of Max Torque
- Variable speed (0-800 RPM) for a wide range of fastening applications

LXT



XWT12RB
18V LXT® Sub-Compact Brushless 3/8" Impact Wrench Kit

- BL™ Brushless Motor delivers 130 ft.lbs. of Max Torque and 230 ft.lbs. of Nut-Busting Torque
- Variable 2-speed (0-1,300/0-2,400 RPM & 0-2,000/0-3,600 IPM) provides fastening control for a wide range of applications

LXT SUB-COMPACT BRUSHLESS



DMP180SYX
18V LXT® Inflator Kit

- Convenience tops off cars and light truck tires with speed and ease
- Easily inflates bicycle tires, sports balls, and more

LXT



XWT11T
18V LXT® Brushless 3-Speed 1/2" Impact Wrench Kit

- BL™ Brushless Motor delivers 210 ft.lbs. of Max Torque and 295 ft.lbs. of Nut-Busting Torque
- Compact and ergonomic design at only 5-3/4" long

LXT BRUSHLESS



XWT08T
18V LXT® Brushless 1/2" Impact Wrench Kit

- BL™ Brushless Motor delivers 740 ft.lbs. of Max Torque and 1,180 ft.lbs. of Nut-Busting Torque
- 3-speed (0-900/0-1,000/0-1,800 RPM & 0-1,800/0-2,000/0-2,200 IPM) for precise fastening control

LXT BRUSHLESS



XWT07T
18V LXT® Brushless 3/4" Impact Wrench Kit

- BL™ Brushless Motor delivers 780 ft.lbs. of Max Torque and 1,250 ft.lbs. of Nut-Busting Torque
- 3-speed power selection switch (0-900/0-1,000/0-1,800 RPM & 0-1,800/0-2,000/0-2,200 IPM) provides precise fastening control

LXT BRUSHLESS





GA5053R NEW
4-1/2" / 5" Paddle Switch Angle Grinder, with Non-Removable Guard

- Non-removable guard is designed to remain permanently attached to tool
- Quick guard rotation allows easy tool-less adjustment for increased productivity

GAG10M1 NEW
40V max XGT® Brushless 7" / 9" Paddle Switch Angle Grinder Kit, with Electric Brake, AWS® Capable

- Makita brushless motor along with a single 40V max XGT® battery combine to deliver the power performance required for heavy application
- Automatic-start Wireless System (AWS®) for wireless power-on/off communication between tool and dust extractor (AWS® Transmitter sold separately)

XGT AWS CAPABLE



XAG11T
18V LXT® Brushless 4-1/2" / 5" Cut-Off/Angle Grinder Kit

- Electric brake stops the grinding or cut-off wheel in 2 seconds or less for maximum productivity
- Active Feedback-sensing Technology (AFT®) turns the motor off if rotation of the wheel is suddenly forced to stop

LXT BRUSHLESS **AFT**



XAG12PT1
18V X2 LXT® (36V) Brushless 7" Cut-Off/Angle Grinder Kit

- Two 18V LXT® Lithium-Ion batteries deliver corded power without leaving the 18V LXT® battery platform
- Electric brake stops the grinding or cut-off wheel in 4.5 seconds or less for maximum productivity

LXT POWERED BY **BRUSHLESS** **AFT**



XAG13PT1
18V X2 LXT® (36V) Brushless 9" Cut-Off/Angle Grinder Kit

- Two 18V LXT® Lithium-Ion batteries deliver corded power without leaving the 18V LXT® battery platform
- Electric brake stops the grinding or cut-off wheel in 4.5 seconds or less for maximum productivity

LXT POWERED BY **BRUSHLESS** **AFT**



ALSO AVAILABLE

198509-5
9" Dust Extraction Cutting Guard

- Easily adjustable depth setting allows up to 2-3/8" cutting depth when used with a 9" cutting blade
- Plunge action feature allows maximum dust containment while initiating a cut



GA5080 NEW
5" X-LOCK High-Power Angle Grinder, with SJS™

- X-LOCK quick change system allows for tool-free wheel changes with an easy snap-on mounting and fast change-outs by simply pulling a release lever
- Powerful 13 AMP motor delivers more output for the most demanding applications

COMPLETE LINE OF X-LOCK ACCESSORIES AVAILABLE, ASK SALES REP FOR DETAILS.



GA6020YX1
6" SJS™ Cut-Off/Angle Grinder

- Powerful 10.5 AMP motor delivers 10,000 RPM to handle the most demanding applications
- SJS™ technology is a mechanical clutch system that helps prevent motor and gear damage by allowing the drive shaft to slip



GA7011C
7" Angle Grinder

- Powerful 15.0 AMP motor delivers 6,000 RPM
- Constant speed control automatically applies additional power to the motor to maintain speed under load



GA9031Y
9" Angle Grinder

- Powerful 15.0 AMP motor delivers 6,600 RPM
- Spiral bevel gears for smoother rotations and a more efficient transfer of energy



XAG26Z NEW
18V LXT® Brushless 4-1/2" / 5" Paddle Switch X-LOCK Angle Grinder, with AFT®

- X-LOCK quick change system allows for tool-free wheel changes with simple snap-on mounting and pull release lever for change-out

COMPLETE LINE OF X-LOCK ACCESSORIES AVAILABLE, ASK SALES REP FOR DETAILS.

LXT BRUSHLESS **X-LOCK** **AFT**



XNJ01T
18V LXT® 16 Gauge Nibbler Kit

- Makita-built motor delivers 1,900 SPM for faster and smooth cutting
- Ideal for cutting roofing sheet metal at thicknesses up to 16 gauge



JN3201
10 Gauge Nibbler

- Less noise at 81 dB(A) for continuous operation
- Well balanced with a rubberized soft grip handle for greater comfort



JS1602
16 Gauge Shear

- Powerful 3.3 AMP motor delivers 4,000 SPM for the most demanding applications
- Small circumference barrel grip (only 2-1/4") for added comfort



JS3201
10 Gauge Shear

- Powerful 6.2 AMP motor; 1,600 SPM for the most demanding applications
- Engineered to cut without the material loss in kerf



**XSR01PT****36V (18V X2) LXT® Brushless Rear Handle 7-1/4" Circular Saw Kit (5.0Ah)**

- X2 LXT® technology delivers up to 558 crosscuts per charge in 2x4 SPF lumber using the two 5.0Ah batteries
- Large 2-9/16" cutting capacity at 90°; cuts 3X material in a single pass

GSR02M1 NEW**40V max XGT® Brushless Rear Handle 10-1/4" Circular Saw Kit, AWS® Capable**

- Makita-built brushless motor delivers 4,000 RPM for faster cutting than corded
- The digital communication within XGT® optimizes performance to provide up to 2X longer sustained power under heavy-load applications

XSH06PT**36V (18V X2) LXT® Brushless 7-1/4" Circular Saw Kit (5.0Ah)**

- Powered by two LXT® batteries; X2 LXT® technology delivers more power, speed and run time without the hassles of a cord
- Makita built electronically controlled BL™ Motor delivers 6,000 RPM for maximum performance and 50% longer run time per charge

XSC03T**18V LXT® 5-3/8" Metal Cutting Saw Kit, with Electric Brake & Chip Collector**

- Up to 2" cutting depth in various metal materials including thread rod, channel strut, conduit, pipe, square tubing, sheet metal and more
- Makita-built motor delivers 3,600 RPM for faster cutting using an 18V LXT® Lithium-Ion battery

XSC04T**18V LXT® 5-7/8" Metal Cutting Saw Kit, with Electric Brake & Chip Collector**

- Powerful BL™ Brushless Motor Delivers up to 125 cuts per charge in 1" SCH 40 Pipe using an 18V LXT® 5.0Ah Battery
- Up to 2-1/4" cutting depth in various metal materials including thread rod, channel strut, conduit, pipe, square tubing, sheet metal and more

XBP02TX**18V LXT® Portable Band Saw Kit**

- 4-3/4" cutting capacity accepts a 44-7/8" blade and is ideal for cutting multiple metal materials
- Makita-built motor delivers faster cutting with variable speed 275-530 ft./min.

XBP03T**18V LXT® Compact Band Saw Kit**

- 2-1/2" cutting capacity is ideal for cutting conduit, Unistrut®, copper pipe, threaded rod and more
- Exterior blade adjustment provides more accurate blade tracking for increased cutting performance

5007MG**7-1/4" Magnesium Circular Saw**

- Magnesium components create a lightweight saw that's jobsite tough
- Large cutting capacity (2-1/2" at 90°) and bevel capacity (0°-56°) with positive stops at 22.5° and 45°

**5377MG****7-1/4" Magnesium Hypoid Saw**

- Hypoid gears deliver more power to the blade for more efficient cutting
- Magnesium components create a lightweight saw (13.2 lbs.) that is well balanced and job site tough

**5104****10-1/4" Circular Saw**

- Cuts 4x lumber in a single pass
- 14 AMP motor delivers enough power to cut beams and timber
- Well balanced and weighs only 20.3 lbs. for increased operator comfort

**4131****7-1/4" Metal Cutting Saw**

- Powerful 13 AMP motor cuts through various types of metal
- Heavy duty blade cover provides increased chip protection
- Virtually spark-free cuts

**2107FZ****Portable Band Saw**

- Powerful 6.5 AMP motor with large (4-3/4" x 4-3/4") cutting capacity for demanding applications
- Adjustable front handle for greater maneuverability and comfort

**5402NA****16-5/16" Circular Saw**

- Large cutting capacity for beams and timber
- Powerful 15 AMP motor delivers enough power to cut through pressure treated lumber

Part #
194701-1

Saw Storage Holder

JR3070CT**AVT® Recipro Saw - 15 AMP**

- Anti-Vibration Technology for 2X less vibration
- Powerful 15 AMP motor with electronic speed control maintains constant speed under load

AVT®
Anti-Vibration TechnologyNEW FROM
15**XRJ05T****18V LXT® Brushless Recipro Saw Kit**

- Makita-built 2-speed brushless motor delivers 0-2,300 (Low) & 0-3,000 (High) strokes per minute

LXT® BRUSHLESS

**JV0600K****Top Handle Jig Saw**

- 6.5 AMP motor and 3 orbital settings plus straight cutting deliver faster and more accurate cuts
- Variable speed control dial (500-3,100 SPM) enables user to match the speed to the application

**XVJ02Z****18V LXT® Brushless Jig Saw**

- BL™ Brushless motor optimizes battery energy use for up to 50% longer run time
- Variable 6-speed control dial (800-3,500 SPM) enables user to match the speed to the application



SAW ACCESSORIES

10-1/4" 24T C.T.
Circular Saw BladePart #
A-9491016-5/16" x 1" 32T
Carbide-Tipped Band
Saw BladePart #
A-9095644-7/8" 18TPI
Band Saw BladePart #
792556-A32-7/8" 18 TPI Compact
Band Saw Blade, 5/pkPart #
B-405597-1/4" 38T C.T.
Saw Blade, Ferrous MetalPart #
A-938215-3/8" 30T C.T.
Saw BladePart #
A-950375-7/8" 32T C.T.
Saw BladePart #
A-960957-1/4" 24T C.T.
Circular Saw BladePart #
B-61656

MITER SAWS / STANDS / SANDERS

LS1019LX

10" Dual-Bevel Sliding Compound Miter Saw with Stand

- Largest crown molding cutting capacity in its class
- 4-Steel Rail Sliding System increases rigidity to produce superior cuts
- Exclusive 6 linear ball bearings engineered to deliver "dead-on" accurate cuts



LS1019L Miter saw only

LS1219LX

12" Dual-Bevel Sliding Compound Miter Saw with Stand

- Includes a 33.7 lbs. durable compact folding stand with transport wheels and a side handle for easier job site portability
- Increased capacity for up to 8" crown molding (vertically nested), 6-3/4" baseboard (vertical), and 15" crosscuts at 90°



LS1219L Miter saw only

LS1040

10" Compound Miter Saw

- Includes a 33.7 lbs. durable compact folding stand with transport wheels and a side handle for easier job site portability
- Increased capacity for up to 8" crown molding (vertically nested), 6-3/4" baseboard (vertical), and 15" crosscuts at 90°



LS1221

12" Compound Miter Saw

- Powerful 15 AMP direct drive motor and 4,000 RPM for improved performance
- 4-1/2" tall pivoting fence for cutting up to 5-1/2" crown molding
- Weighs only 37 lbs. for easy portability



XSL06PT

18V X2 LXT® (36V) Brushless 10" Dual-Bevel Sliding Compound Miter Saw Kit

- X2 LXT® technology delivers up to 334 cuts per charge in 2x4 SPF and up to 192 cuts per charge in 2x12 SPF lumber using two 5.0Ah batteries
- Unique 2-Steel Rail Sliding System design allows operation flush against a wall



XSL07PT

18V X2 LXT® (36V) Brushless 12" Dual-Bevel Sliding Compound Miter Saw Kit

- X2 LXT® technology delivers up to 175 cuts per charge in 2x12 SPF lumber using two 5.0Ah batteries
- Unique 2-Steel Rail Sliding System design allows operation flush against a wall



GSL02M1 NEW

40V max XGT® Brushless 8-1/2" Dual-Bevel Sliding Compound Miter Saw Kit, AWS® Capable

- Makita-built brushless motor delivers 4,800 RPM for faster cutting performance
- The digital communication within XGT® optimizes performance to provide up to 2X longer sustained power under heavy-load application



LW1401

14" Cut-Off Saw

- Powerful 15 AMP motor delivers 3,800 RPM for superior performance and durability
- Adjustable spark guard designed to divert sparks



XWL01T

18V X2 LXT® (36V) Brushless 14" Cut-Off Saw Kit

- Two 18V LXT® Lithium-Ion batteries deliver the power and run time for corded demands without leaving the 18V LXT® platform
- The BL™ Brushless Motor eliminates carbon brushes, enabling the BL™ Motor to run cooler and more efficiently for longer life; delivers 3,800 RPM



XLS01T

18V LXT® Brushless Drywall Sander Kit, AWS® Capable

- Delivers up to 35 minutes of run-time, using 120 grit abrasive discs with one 18V LXT® 5.0Ah Battery
- Direct drive BL™ Brushless motor positioned at the sanding head for increased sanding efficiency and reduced maintenance



ALSO AVAILABLE

199937-7 Extension Handle Support Set, XLS01

- Allows for an additional 22-3/4" longer reach from the normal extended length



E-02917 9" Drywall Sanding Disc, Hook & Loop, 150 Grit, 25/pkg



B-68535 9" Drywall Sanding Disc, Hook & Loop, 40 Grit, 25/pkg



B-68563 9" Drywall Sanding Disc, Hook & Loop, 180 Grit, 25/pkg



B-68541 9" Drywall Sanding Disc, Hook & Loop, 80 Grit, 25/pkg



B-68579 9" Drywall Sanding Disc, Hook & Loop, 320 Grit, 25/pkg



B-68557 9" Drywall Sanding Disc, Hook & Loop, 120 Grit, 25/pkg



E-02696 9" Drywall Sanding Disc, Hook & Loop, 220 Grit, 25/pkg



XBO01T

18V LXT® 5" Random Orbit Sander Kit

- Three speed settings (7,000/9,500/11,000 OPM) engineered for fast material removal
- Up to 65 minutes (low speed) and 32 minutes (high speed) of run time on a single charge



BO4556K

1/4 Sheet Finishing Sander

- 14,000 OPM for fast sanding
- Precision engineered all-ball-bearing construction for reduced vibration and noise



Includes Tool Case

BO5041K

5" Random Orbit Sander

- More power for faster sanding
- Smooth and fast sanding with 3.0 AMP motor



SANDERS / PLANERS / ROUTERS / MULTI-TOOLS / NAILERS



9903

3" x 21" Belt Sander

- Powerful 8.8 AMP Motor; only 85dB
- Variable speed control dial (690 -1,440 ft./min.) to match the speed to the application
- Auto-tracking belt system tracks belt without adjustment



9403

4" x 24" Belt Sander

- Powerful 11 AMP motor; 84dB
- Low noise (84dB) for operator comfort
- Labyrinth construction seals and protects motor and bearings from dust and debris for longer tool life



XPK02Z

18V LXT® Brushless 3-1/4" Planer, AWS™ Capable

- Planes up to 3-1/4" wide and 1/8" deep in a single pass with ability to rabbet up to 1" deep
- Auto-start Wireless System (AWS™) utilizes Bluetooth® technology for wireless power-on/off communication between tool and optional dust extractor
- High power-to-weight ratio; weighs only 7.8 lbs. with battery (battery not included)

LXT BRUSHLESS AWS™ CAPABLE



KP0800K

3-1/4" Planer

- High power-to-weight ratio; weighs only 5.7 lbs.
- 6.5 AMP motor delivers more output power for increased stock removal and superior finishes
- Planes up to 3-1/4" wide and 3/32" deep in a single pass



Includes Tool Case

RP2301FC

18V LXT® 3-1/4" Planer

- Powerful 15 AMP motor delivers 9,000 - 22,000 RPM for smooth routing
- Electronic speed control maintains constant speed under load
- Variable speed control dial enables user to match the speed to the application



XTR017

18V LXT® Brushless Compact Router Kit

- LXT® technology delivers 380 feet of cutting performance in red oak using a 1/4" (6mm) straight bit at a 5/32" (4mm) depth with a 5.0Ah battery
- The electronically-controlled BL™ Brushless Motor efficiently uses energy to match torque and RPM to the changing demands of the application

LXT BRUSHLESS



XDS01Z

18V LXT® Cut-Out Saw

- Makita-built variable speed motor delivers 0-6,000 strokes per minute for faster and more efficient cutting
- Designed to cut openings in installed board with an adjustable blade depth up to 1-3/16" (9/16" in wood)

LXT



XMT03S

18V LXT® Multi-Tool Kit

- 18V LXT™ Lithium-Ion battery provides up to 20 minutes of continuous run time
- Variable speed control dial (6,000-20,000 OPM) enables user to match the speed to the application
- 3.2" oscillation angle engineered for faster, more aggressive cutting and sanding

LXT



XMT04ZB

18V LXT® Sub-Compact Brushless Multi-Tool

- Variable speed control dial (10,000-20,000 OPM) enables user to match the speed to the application
- Anti-Vibration Technology (AVT™) for up to 85% reduced vibration
- Compatible with StarlockMax®, StarlockPlus®, and Starlock® accessories

LXT BRUSHLESS



AN924

21" Full Round Head 3-1/2" Framing Nailer

- Faster nail driving speed for maximum performance
- Lightweight design at only 8.3 lbs.
- Large capacity air chamber for increased power to drive nails up to 3-1/2" x .148 in diameter



3 YEAR WARRANTY
BRUSHLESS NAILER

AN902

3-1/2" Framing Coil Nailer

- 2-mode trigger allows operator to select sequential or contact nailing operations
- "Tool-less" depth adjustment engineered for more precise flush and countersink nailing
- Drives 1-3/4" to 3-1/2" coil framing nails



3 YEAR WARRANTY
BRUSHLESS NAILER

AF506

2" Brad Nailer, 18 Gauge

- Powerful motor drives a range of 18 gauge brad nails from 5/8" to 2" into hard or soft wood applications
- Aluminum body, magazine and cylinder for strength and durability; weighs only 2.9 lbs.



3 YEAR WARRANTY
BRUSHLESS NAILER

AF601

2-1/2" Straight Finish Nailer, 16 Gauge

- "Tool-less" depth adjustment for more precise nailing
- Efficient motor design offers leading power performance
- Nail lock-out mechanism protects tool and work surface from dry-fires



3 YEAR WARRANTY
BRUSHLESS NAILER

AN613

15" 2-1/2" Siding Canister Nailer

- "Tool-less" loading canister
- "Tool-less" depth adjustment with 9 settings for driving nails to the precise level
- 2-mode selector switch: single sequential mode and contact actuation mode



3 YEAR WARRANTY
BRUSHLESS NAILER

AN454

1-3/4" Coil Roofing Nailer

- Faster nail driving speed for maximum performance
- Aluminum housing for longer tool life
- Easy, one-step open, adjustable canister system for faster, more precise nail loading



3 YEAR WARRANTY
BRUSHLESS NAILER

XNB01Z

18V LXT® 2" Brad Nailer, 18 Gauge

- Easy-loading adjustable canister
- "Tool-less" depth adjustment engineered for more precise control and flush nailing
- "Tool-less" shingle guide designed for easy adjustments and consistent shingle placement



LXT

XNB02RJ

18V LXT® 2-1/2" Straight Finish Nailer, 16 Gauge Kit

- Powerful motor design drives standard 16 gauge, straight finish nails from 1" to 2-1/2" in length
- Drives up to 1,000 finish nails using a 5.0Ah 18V LXT™ Battery (battery not included)



LXT

XNB02Z Tool Only

XTP02Z

18V LXT® 1-3/8" Pin Nailer, 23 Gauge

- Drives 6 different lengths, 5/8", 11/16", 3/4", 1", 1-3/16" and 1-3/8", of 23 gauge pin nails (tool does not work with 1-1/4" pin nails)
- Magazine capacity up to 120 pin nails



LXT

XTS01T

18V LXT® 3/8" Crown Stapler Kit

- Fastens a wide range of 3/8" crown staples from 3/8" to 7/8" in length; also utilizes Arrow™ T50 type flat crown staples
- A convenient window on magazine shows the number of remaining staples



LXT

XTS01Z Tool Only

MAC100QK1

QUIET SERIES

Quiet Compact 1 Gallon Air Compressor and Brad Nailer Combo Kit

- Quiet Series design at only 58 dB for operator and crew comfort; ideal for indoor use
- Runs at a lower RPM (1,750) resulting in longer motor and pump life
- Brad nailer has an aluminum body, magazine and cylinder for strength and durability



MAC210Q

QUIET SERIES

Quiet Series 1 HP, 2 Gallon, Oil-Free, Electric Air Compressor

- Quiet Series design at only 60 dB for operator and crew comfort; ideal for indoor use
- Runs at a lower RPM (1,750) resulting in longer motor and pump life
- Complete roll-cage construction provides protection to withstand a variety of job-site, transporting, and storage environments



MAC320Q

QUIET SERIES

Quiet Series 1-1/2 HP, 3 Gallon, Oil-Free, Electric Air Compressor

- Quiet Series design at only 60 dB for operator and crew comfort; ideal for indoor use
- Runs at a lower RPM (1,750) resulting in longer motor and pump life
- Complete roll-cage construction provides protection to withstand a variety of job-site, transporting, and storage environments



MAC5501G

BIG BORE™

5.5 HP* Big Bore™ Gas Air Compressor

- "V" Twin Style Pump runs cooler and provides 12.5 CFM at 100 PSI
- Powerful Honda GX160 4-stroke engine for increased performance and superior reliability
- 10-gallon twin tanks provide air supply to multiple nailers
- Cast iron pump with Big Bore™ cylinder and piston is engineered to provide faster recovery time for improved performance



MAC2400

BIG BORE™

2.5 HP* Big Bore™ Air Compressor

- Pump runs at lower RPM resulting in lower noise (79dB)
- Cast iron pump with Big Bore™ cylinder and piston is engineered to provide faster recovery time for improved performance
- Powerful 2.5 HP 4-Pole motor produces 4.2 CFM at 90 PSI for increased productivity and lower noise



MAC700

BIG BORE™

2.0 HP* Big Bore™ Air Compressor

- Low noise, low AMP draw and high output
- Cast iron pump with Big Bore™ cylinder and piston is engineered to provide faster recovery time for improved performance
- Powerful 2.0 HP 4-Pole motor produces 3.3 CFM at 90 PSI for increased productivity and lower noise



MAC5200

BIG BORE™

3.0 HP* Big Bore™ Air Compressor

- Powerful enough to run two framing nailers
- Cast iron pump with Big Bore™ cylinder and piston is engineered to provide faster recovery time for improved performance
- Powerful 3.0 HP* motor produces 6.5 CFM at 90 PSI for increased productivity



*Maximum horsepower

EA6100PRGG

20" 61 cc Chain Saw

- Easy Start spring-assisted starter for quick starting with less force
- Stratified Air Scavenging engine for lower emissions and improved fuel efficiency
- Magnesium housing for improved durability and less weight (only 13.2 lbs.)



E-00131
20" Guide Bar, 3/8", .050"

E-00284
20" Saw Chain, 3/8", .050"

EA6100PREG

18" 61 cc Chain Saw

- Easy Start spring-assisted starter for quick starting with less force
- Stratified Air Scavenging engine for lower emissions and improved fuel efficiency
- Magnesium housing for improved durability and less weight (only 13.2 lbs.)



E-00119
18" Guide Bar, 3/8", .050"

E-02456
18" Saw Chain, 3/8", .050"

EA5600FRGG

20" 56 cc RIDGELINE™ Chain Saw

- Heavy-duty cartridge air filter system for extended air filter life and improved durability
- Powerful 4.1 HP Stratified Air Scavenging engine delivers high cutting performance with improved fuel efficiency



E-00131
20" Guide Bar, 3/8", .050"

E-00284
20" Saw Chain, 3/8", .050"

EA5600FREG

18" 56 cc RIDGELINE™ Chain Saw

- Heavy-duty cartridge air filter system for extended air filter life and improved durability
- Powerful 4.1 HP Stratified Air Scavenging engine delivers high cutting performance with improved fuel efficiency



E-00119
18" Guide Bar, 3/8", .050"

E-02456
18" Saw Chain, 3/8", .050"

EA4300FRDB

16" 42 cc Chain Saw

- Easy Start, spring assisted starter with optimized engine management reduces force required for starting
- "Tool-less" filter access for convenient maintenance
- Magnesium housing for improved durability and less weight (only 10.8 lbs.)



E-00103
16" Guide Bar, 3/8", .050"

E-00256
16" Saw Chain, 3/8", .050"

EA3200SRBB

14" 32 cc Chain Saw

- Compact design with less weight (only 9.0 lbs.)
- Two point durable inertia/mechanical chain brake
- Touch & Stop single lever control shuts off engine with just a touch



E-00088
14" Guide Bar, 3/8", .050"

E-00234
14" Saw Chain, 3/8", .050"

UC3551A / UC4051A

14" / 16" Electric Chain Saw

- "Tool-less" blade and chain adjustments for convenient operation and easy maintenance
- Rubberized grip handles are ergonomically designed for comfort



E-00088
14" Guide Bar, 3/8", .050"

E-00234
14" Saw Chain, 3/8", .050"

E-00103
16" Guide Bar, 3/8", .050"

E-00256
16" Saw Chain, 3/8", .050"

CHAIN SAWS / BLOWERS / HEDGE TRIMMERS



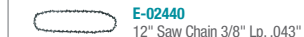
XCU08PT

18V X2 (36V) LXT® Brushless 14" Top Handle Chain Saw Kit

- Makita-built Outer Rotor BL™ Brushless Motor direct-drive system provides power equivalent to a 30cc gas chain saw
- Top handle design built for the professional tree care industry delivers gas equivalent performance



XCU08PT
16" Version



XCU03PT

18V X2 (36V) LXT® Brushless 14" Chain Saw Kit

- Makita-built Outer Rotor BL™ Brushless Motor direct-drive system provides high power efficiency equivalent to a 32cc gas chain saw
- "Tool-less" chain adjustment for convenient operation and maintenance

LXT® BRUSHLESS



XCU04PT

18V X2 (36V) LXT® Brushless 16" Chain Saw Kit

- Makita-built Outer Rotor BL™ Brushless Motor direct-drive system provides high power efficiency equivalent to a 32cc gas chain saw
- "Tool-less" chain adjustment for convenient operation and maintenance

LXT® BRUSHLESS



XCU07PT

18V X2 (36V) LXT® Brushless 14" Chain Saw Kit

- Makita-built Outer Rotor BL™ Brushless Motor direct-drive system provides high power efficiency equivalent to a 32cc gas chain saw
- Captured bar nuts and lateral chain tensioning for convenient operation and maintenance

LXT® BRUSHLESS

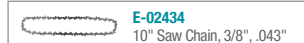


XCU06T

18V LXT® Brushless 10" Top Handle Chain Saw Kit

- Compact top handle design built for the professional tree care industry
- Makita-built Outer Rotor BL™ Brushless Motor direct-drive system provides high power efficiency
- Torque boost mode for cutting dense material

LXT® BRUSHLESS



CHAIN SAW ACCESSORIES

Combo
Safety
Helmet

Part #
986-200-002



Chain Saw
Chaps

Part #
841008-A



Bar and Chain Oil

| Description | Part # |
|---|-------------|
| 1 Quart Bar & Chain Oil (Summer Mix) | 181119-A |
| 1 Quart Bar & Chain Oil 12/pk (Summer Mix) | 181119-A-12 |
| 1 Gallon Bar & Chain Oil, 4/pk (Summer Mix) | 181116-A-4 |
| 1 Gallon Bar & Chain Oil, 4/pk (Winter Mix) | T-03159-4 |



XBU03SM1

18V LXT® Brushless Blower Kit

- Makita-built BL™ Brushless Motor delivers up to 459 CFM and 116 MPH
- Cruise control lever with variable speed trigger for power and run time management
- In-line fan design provides better tool balance and improved ergonomics

LXT® BRUSHLESS



XBU02PT1

18V X2 (36V) LXT® Brushless Blower Kit with 4 Batteries

- Delivers up to 28 minutes of run time at mid-speed (15,800 RPM) using two 18V LXT® 5.0Ah batteries
- BL™ Brushless motor delivers up to 120 MPH air velocity and 473 CFM of air volume

LXT® BRUSHLESS



XBU04PT

18V X2 (36V) LXT® Brushless Blower Kit

- Makita-built BL™ Brushless Motor delivers up to 473 CFM and 120 MPH
- Cruise control lever with variable speed trigger for power and run time management

LXT® BRUSHLESS



XBU04PTV

18V X2 (36V) LXT® Brushless Blower Kit with Vacuum Attachment Kit

- Makita-built BL™ Brushless Motor delivers up to 473 CFM and 120 MPH
- 3-tools-in-1: vacuum, mulcher and blower for convenient clean-up
- 10:1 mulch ratio reduces up to 10 bags of leaves down to 1 bag with shredding blade

LXT® BRUSHLESS



GBU01M1 NEW

40V max XGT® Brushless Cordless Blower Kit

- Makita-built Brushless Motor delivers up to 565 CFM and 143 MPH
- Move heavy debris with turbo boost mode
- XPT™ is engineered to provide increased dust and water resistance in harsh job site conditions

XGT



XHU08T

18V LXT® Brushless 30" Hedge Trimmer Kit

- 30" dual action double-sided shear blade provides increased cutting capacity
- Up to 2 hours of run time using an 18V LXT® 5.0Ah battery

LXT® BRUSHLESS



XHU07T

18V LXT® Brushless 24" Hedge Trimmer Kit

- 24" dual action double-sided shear blade provides optimal performance
- Up to 2-1/2 hours of run time using an 18V LXT® 5.0Ah battery

LXT® BRUSHLESS



XNU01T

18V LXT® Brushless 20" Articulating Pole Hedge Trimmer Kit

- 6 angle settings for efficient trimming of overhead and low-lying hedges
- 20" dual action double-sided shear blade for optimal performance

LXT® BRUSHLESS



XNU02T

18V LXT® Brushless 24" Pole Hedge Trimmer Kit

- 24" dual action double-sided shear blade for optimal performance
- BL™ Brushless motor delivers up to 4,400 SPM for faster cutting

LXT® BRUSHLESS



PICK YOUR POWER

GUX01Z NEW

40V max XGT® Brushless Couple Shaft Power Head

- Makita-built Brushless Motor delivers power of 30cc gas couple shaft power head
- Up to 25% more power than Gas Couple Shaft Power Head*
- 3-speed options (Low: 5,700 RPM, Medium: 8,200 High: 9,700 RPM) for power and run time management
- Variable speed trigger for controlled cutting speed



XUX01Z

18V X2 (36V) LXT® Brushless Couple Shaft Power Head

- BL™ Brushless motor delivers up to 9,700 RPM
- 3-speed options (Low: 5,700 RPM, Medium: 8,200 High: 9,700 RPM) allows the operator to match speed to application
- Compatible with a variety of optional couple shaft attachments for versatility



XUX02Z

18V LXT® Brushless Power Head

- Lever style lock system allows for quick tool-less installation and replacement of attachments
- High/Low speed button for power and run time management
- Variable speed trigger for controlled cutting speed



PICK YOUR ATTACHMENT



EE400MP
Edger Couple Shaft Attachment



ER400MP
Curved String Trimmer Couple Shaft Attachment



EM403MP
Brush Cutter Couple Shaft Attachment



EM405MP
String Trimmer Couple Shaft Attachment



EY402MP
10" Pole Saw Couple Shaft Attachment



EN401MP
20" Articulating Hedge Trimmer Couple Shaft Attachment



EN410MP
20" Double-Sided Hedge Trimmer Couple Shaft Attachment



KR401MP
Cultivator Couple Shaft Attachment



UB401MP
Blower Couple Shaft Attachment



BR400MP
Bristle Brush Couple Shaft Attachment



SW400MP
Paddle Sweep Couple Shaft Attachment



LE400MP
42" Shaft Extension Couple Shaft Attachment

XAU01PTB NEW

36V (18V X2) LXT® Brushless 10" Pole Saw Kit, 8' Length

- Makita-built BL™ Brushless Motor delivers power of a 30cc gas pole saw
- Up to 140 cuts in 4x4 cedar with two 18V LXT® 5.0Ah batteries
- 20% faster cutting speed than a 31.4cc gas engine pole saw



XAU02PTB NEW

36V (18V X2) LXT® Brushless 10" Telescoping Pole Saw Kit, 13' Length

- Telescoping shaft easily adjusts length from 9 ft. to 13 ft. allowing access to hard-to-reach branches
- Makita-built BL™ Brushless Motor provides power of a 30cc gas pole saw



EY2650H25H

25.4 cc MM4® 4-Stroke Engine Telescoping Pole Pruner

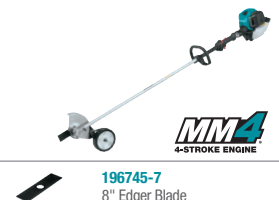
- Telescoping shaft easily adjusts from 8 ft. to 13 ft.
- Reduced cutting head weight for improved balance and reduced operator fatigue



EE2650H

25.4 cc MM4® 4-Stroke Engine Edger

- 8" steel blade for precise cuts and longer blade life
- Adjustable wheel for quick and easy adjustment to desired cutting depth
- Metal skid plate protects gear housing for increased durability



EN5950SH

24" 25.4 cc MM4® 4-Stroke Engine Double-Sided Hedge Trimmer

- Compact design with less weight (only 14.1 lbs.)
- Commercial duty gear case engineered for improved durability
- Tip guard protects blade from unnecessary wear



EN4950H

20" 25.4 cc MM4® 4-Stroke Engine Long-Shaft Articulating Hedge Trimmer

- Steel drive shaft for less vibration and longer equipment life
- 20" double-sided blade with high blade speed (4,200 SPM) for efficient cutting
- Angle change lever quickly and easily adjusts blade angle



GRU01M1 NEW

40V max XGT® Brushless 15" String Trimmer Kit

- Makita-built Outer Rotor Brushless Motor provides high power and increased torque
- Automatic Torque Drive Technology mode automatically shifts from 3,500-6,500 RPM for extended run time or added power
- The digital communication within XGT® optimizes performance to provide up to 2X longer sustained power under heavy-load applications



XRU15PT

18V X2 (36V) LXT® Brushless String Trimmer Kit

- Makita-built Outer Rotor BL™ Brushless Motor direct-drive system provides high power and increased torque
- Automatic Torque Drive Technology mode automatically shifts from 3,500-6,500 RPM for extended run time or added power
- 3 speed options (Low: 3,500 RPM, Medium: 5,300 RPM, High: 6,500 RPM) for power management



XRU17PT

18V X2 (36V) LXT® Brushless String Trimmer Kit

- Makita-built BL™ Brushless Motor provides high power and increased torque
- 17" cutting swath for increased productivity
- Variable speed trigger switch for controlled cutting speed
- 3 speed options (Low: 4,600 RPM, Medium: 5,500 RPM, High: 7,000 RPM) for power management



XUC01PTX1

18V X2 LXT® Brushless Power-Assisted Wheelbarrow Kit

- Up to 100 minutes of run time with two 18V LXT® 5.0Ah batteries
- Powered by (1) 18V LXT® battery with the option to insert (1) additional battery for extended run time
- Makita-built BL™ Brushless Motor for optimal performance
- 290 lbs. maximum load capacity



XUC01PTX2

36V (18V X2) LXT® Brushless Power-Assisted Flat Dolly Kit

- Up to 100 minutes of run time with two 18V LXT® 5.0Ah batteries
- Powered by (1) 18V LXT® battery with the option to insert (1) additional battery for extended run time
- Makita-built BL™ Brushless Motor for optimal performance
- 290 lbs. maximum load capacity



EARTH AUGER BITS, BLADES & ADAPTERS

- E-07347 4" Earth Auger Drill Bit
- E-07353 6" Earth Auger Drill Bit
- E-07369 8" Earth Auger Drill Bit
- E-07375 Earth Auger Drill Bit 21" Extension Bar



- E-07381 Earth Auger Pin
- 327687-6 Earth Auger Bit Adapter
- 327684-2 Earth Auger Bit Adapter, Type A
- 763251-3 Chuck Key

XGD01PT

18V X2 LXT® Brushless Earth Auger Kit

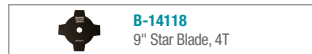
- BL™ Brushless Motor delivers power of a 36 cc gas earth auger
- Drill holes up to 8" wide and 41" deep (extension bar, auger bits and blades sold separately)
- Automatic Speed Change™ technology adjusts drill speed and torque during drilling
- High performance digging with even consistent holes for landscaping, construction and soil sampling



XRU16PT

18V X2 (36V) LXT® Brushless Brush Cutter Kit

- Makita-built BL™ Brushless Motor provides power equivalent to a 30cc gas brush cutter
- Automatic Torque Drive Technology mode automatically shifts from 4,600-7,000 RPM for extended run time or added power
- 3 speed options (Low: 4,600 RPM, Medium: 5,500 RPM, High: 7,000 RPM) for power management



ALSO AVAILABLE

197680-2 Service Kit

- Maintenance and service components to tune up engine for optimum performance and durability
- For Makita MM4® Trimmers EM2650LH, EM2650UH, EM2652LHN, EE2650H, EN4950H, EN4951SH, EN5550SH, EN5950SH, EN7350SH



RENTAL FLEET SUPPORT

Makita tools deliver best in class performance with less downtime producing better ROI for your Rental Fleet. The Makita Rental Team is ready to provide support through product knowledge and sales & service training. Contact us today.

For more information contact: **(800) 4-MAKITA**
rental@makitausa.com

GET REGISTERED

Register your products and keep them in one safe place, your own Tool Box. It is where you can go to obtain your tool model numbers and serial numbers in the event your tool is stolen or needs service.

makitools.com/productregistration

GET SERVICE

Go online to makitools.com/service and download parts breakdowns and owners manuals for your tools.

makitools.com/service



SERVICE CENTERS

Makita's Network of Service Centers ensure complete satisfaction on every product that we manufacture

Free Technical Support:

Locate Nearest Service Center ONLINE:

makitools.com/service

1-800-4-MAKITA
(625482)

Makita® General Product Limited Warranty

Every Makita® product is warranted to be free of defects from workmanship and materials for the period of ONE YEAR from the date of original purchase. Certain products referenced below have longer warranties. Should any trouble develop during the one-year period, return the COMPLETE product, freight prepaid by user, to one of Makita's Factory or Authorized Service Centers. If inspection shows the trouble is caused by defective workmanship or material, Makita will repair (or at our option, replace) without charge.



Makita® 3-Year Limited Warranty, Pneumatic Nailer, Lithium-Ion Tool, Battery and Charger

Every Makita® product is warranted to be free of defects from workmanship and materials for the period of ONE YEAR from the date of original purchase. Certain products referenced below have longer warranties. Should any trouble develop during the one-year period, return the COMPLETE product, freight prepaid by user, to one of Makita's Factory or Authorized Service Centers. If inspection shows the trouble is caused by defective workmanship or material, Makita will repair (or at our option, replace) without charge.



These warranties do not apply to Makita Accessories or where:

- Repairs have been made or attempted by others
- Repairs are required because of normal wear and tear. With regard to Pneumatic Nailers, normal wear parts include the following and are not covered under this warranty: piston/driver assemblies, piston stops, driver blades, rubber o-rings, seals, isolators, air filters, and driver belts.
- The tool has been abused, misused, improperly maintained or operated. With regard to Pneumatic Nailers, improper operation includes the failure to use clean, dry regulated compressed air and/or air pressures exceeding the maximum indicated on the nailer casting. With regard to Lithium-Ion Tools, improper operation includes the use of a non-genuine or "knock-off" battery on a Lithium-Ion Tool or Charger. With regard to Laser Instruments, abuse includes liquid damage or physical damage caused by impact.
- Alterations have been made to the tool.

IN NO EVENT SHALL MAKITA BE LIABLE FOR (A) ANY INDIRECT, INCIDENTAL, PUNITIVE OR CONSEQUENTIAL DAMAGES ARISING FROM THE SALE OR USE OF THE PRODUCTS SOLD UNDER THESE WARRANTIES, OR (B) ANY AMOUNT IN EXCESS OF THE AMOUNT ACTUALLY PAID TO MAKITA FOR THE PRODUCTS SOLD HEREUNDER. THIS LIMITATION APPLIES BOTH DURING AND AFTER THE TERMS OF THE WARRANTY.

MAKITA DISCLAIMS LIABILITY FOR ANY IMPLIED WARRANTIES, INCLUDING IMPLIED WARRANTIES OF "MERCHANTABILITY" AND "FITNESS FOR A SPECIFIC PURPOSE" AFTER THE EXPIRATION OF ANY EXPRESS WARRANTY.

This warranty gives you specific legal rights, and you may also have other rights which vary from state to state. Some states do not allow the exclusion or limitation of incidental or consequential damages, so the above limitation or exclusion may not apply to you. Some states do not allow limitation on how long an implied warranty lasts, so the above limitation may not apply to you.

9998R029 BR0-0921-4N MA-10594-21 The MAKITA TEAL COLOR is the trade dress of Makita® Corporation and is protected under common law and registered with the U.S. Patent and Trademark Office.

